



UNIVERSITY OF
LIVERPOOL



The University of Manchester



The University
Of Sheffield.

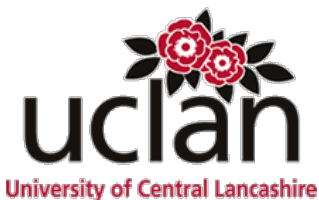
NTEC - Nuclear Technology Education Consortium

Karl Whittle

School of Engineering
University of Liverpool
Brownlow Hill
Liverpool, L69 3GH

karl.whittle@liverpool.ac.uk

Imperial College
London



NTEC

Nuclear Technology Education Consortium

Educating the nuclear workforce since 2005.



DEFENCE ACADEMY
OF THE UNITED KINGDOM
Intellectual Excellence in Defence



UNIVERSITY OF LEEDS



UNIVERSITY OF
BIRMINGHAM

NTEC

Nuclear Technology Education Consortium
Educating the nuclear workforce since 2005.

History

Started 2005

Aim - address the training gap

Currently - consortium 8 universities/bodies delivering modules

Birmingham, Defence Academy, Imperial, Leeds, [Liverpool](#), [Manchester](#), [Sheffield](#), UCLan, (Vienna/Prague)



UNIVERSITY OF
LIVERPOOL



The University of Manchester



The
University
Of
Sheffield.



UNIVERSITY OF
BIRMINGHAM



DEFENCE ACADEMY
OF THE UNITED KINGDOM
Intellectual Excellence in Defence

**Imperial College
London**



UNIVERSITY OF LEEDS

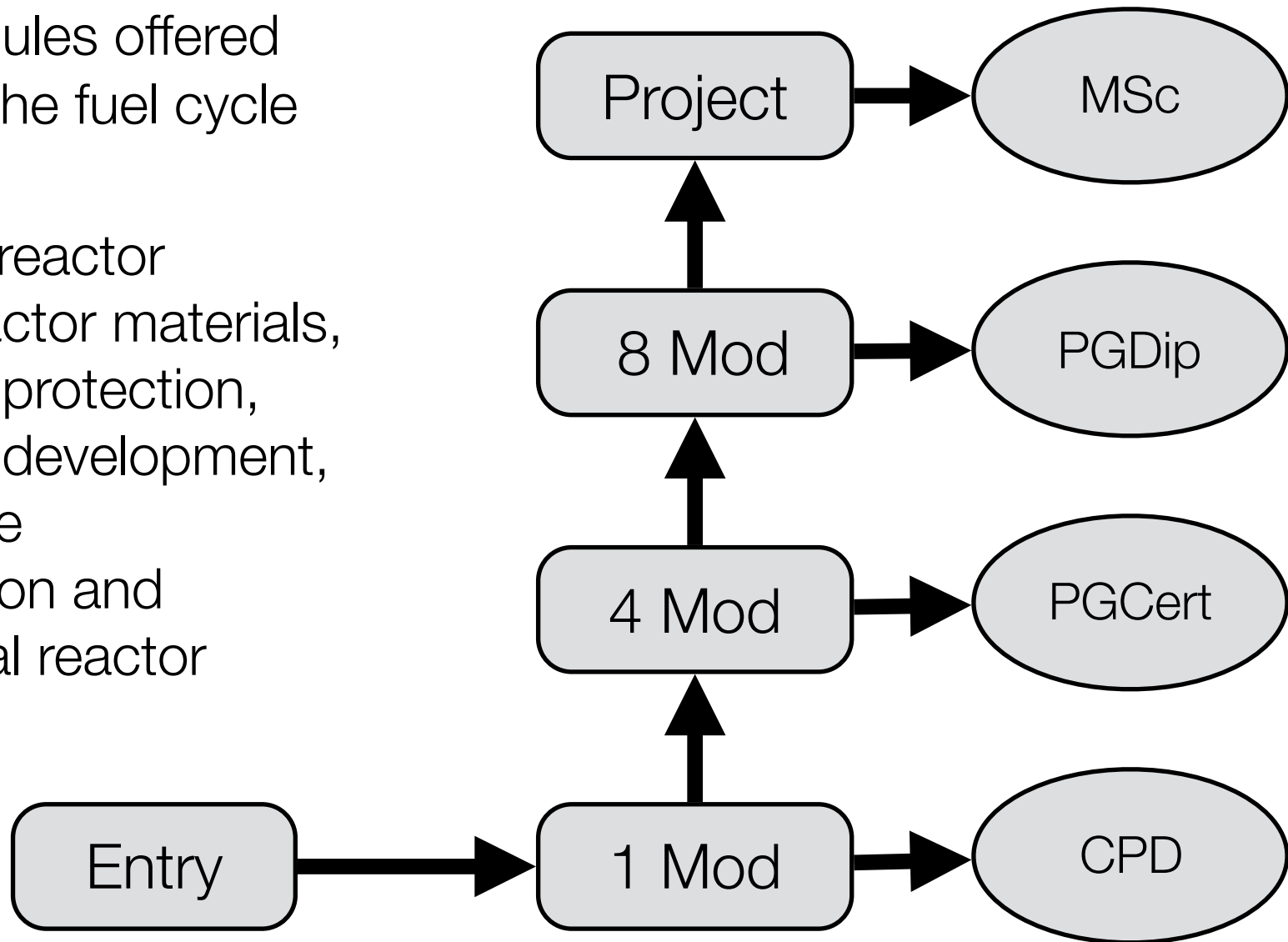


University of Central Lancashire

MSc Course Structure (FT/PT)

Taught modules offered
18, across the fuel cycle

Examples : reactor
physics, reactor materials,
radiological protection,
safety case development,
policy, waste
immobilisation and
experimental reactor
physics



Other Course Options

Available for PGDip and PGCert

Industry based students can take modules

Internal development

PT MSc

CPD

Accreditation

9 modules available via Distance Learning



Accreditation



Course accredited by:



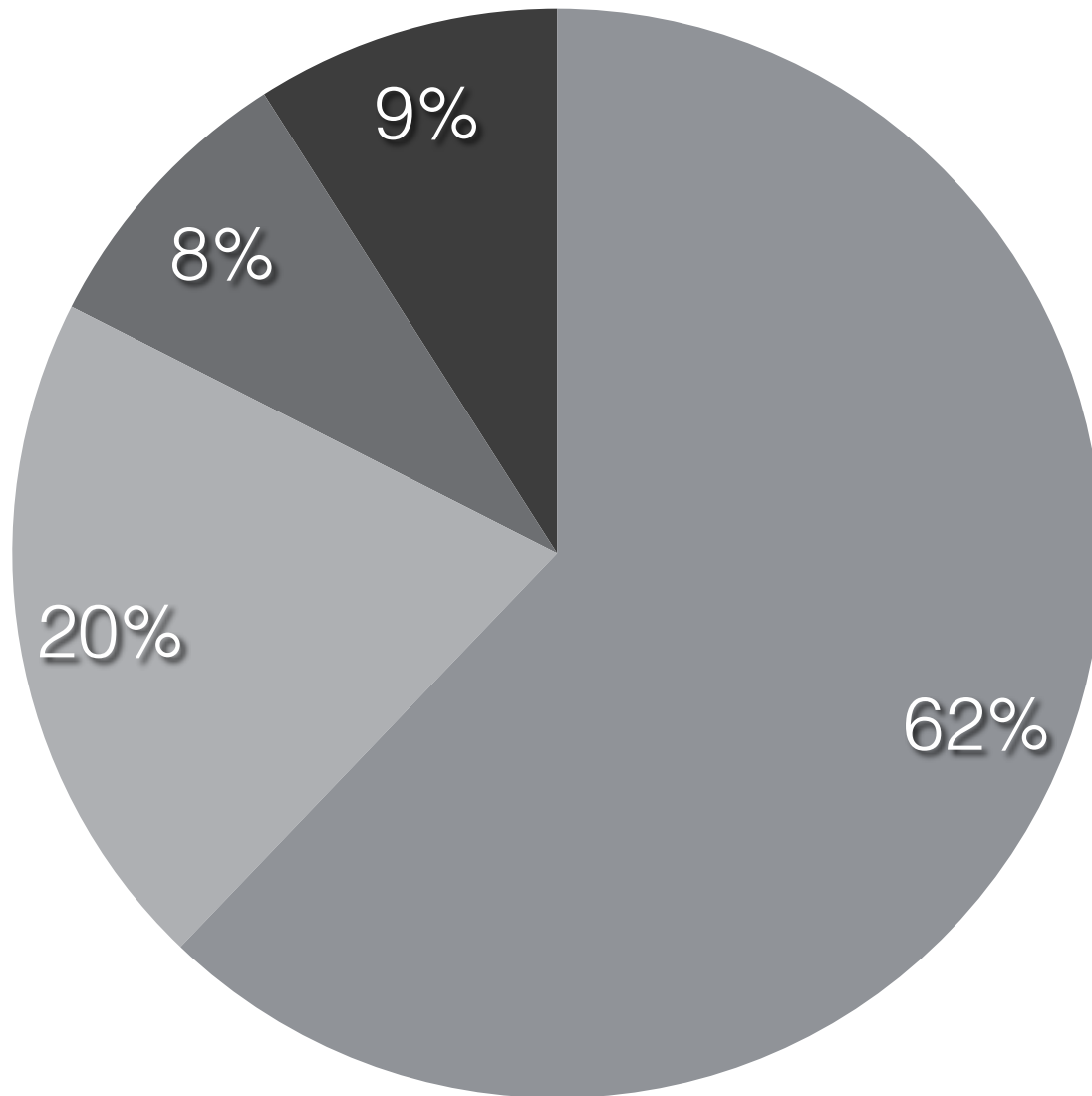
Course endorsed by:



Student Numbers

	Full-Time MSc	Part-Time MSc	PG Certificate	PG Diploma	DL	CPD/Other	EngD	Nuclear Grads
2005/6	0	16	0	0	0	18	0	0
2006/7	10	7	2	0	0	29	3	0
2007/8	9	9	0	0	0	16	8	0
2008/9	23	7	3	0	0	37	14	0
2009/10	17	12	2	0	7	35	20	0
2010/11	30	12	0	0	9	29	18	0
2011/12	20	16	3	1	8	31	13	2
2012/13	20	9	2	0	3	30	14	2
2013/14	17	8	6	1	1	27	40	0
2014/15	32	9	1	1	2	28	30	21
2015/16	19	11	3	0	3	45	4	53
Total	197	116	22	3	33	325	164	78

Destinations



- Employment - Nuclear
- Nuclear Related Research
- Employment - Other
- Unknown/Did not respond

From **177** FT Students

- **110** have gone into Nuclear Employment
- **36** have gone into Nuclear Research
- **15** are in non Nuclear employment
- **16** are unknown or did not respond.